

A NAUTICAL YARN

Early Fall 2020

Monday—Wed	10-3
Thurs-Fri	10-5
Sat	10-4
Sun	Closed

Inside this issue:

News & Events	1
Class Schedule	2

Nautical Yarn

108 S Rath
Ludington, MI 49431
231-845-9868
info@nauticalyarn.com

Early Fall Classes

This newsletter contains a class schedule for September—December 2020. All classes are offered via remote learning using ZOOM. Join your kids & grandkids using remote learning technology and techniques!

NAUTICAL YARN

We re-opened in June and have been busy ever since. Of course, sales are down from previous years, but Ludington has had many visitors this summer and many of the visitors have stayed for weeks and months. So we have seen many new faces throughout the summer. Of course, our local customers are here and we love to have old friends stop in so we can see their familiar faces. As a shop owner, I must say Nautical Yarn is fortunate to be located in beautiful downtown Ludington by the Lake. Many Local Yarn Shops (LYS) don't have the summer clientele and are struggling more than we are during this COVID time. Also, thanks so much to all of you who purchased online during the months we were closed in the spring. We truly appreciate your support!

REMEMBER! Nauticalyarn.com is a fantastic online store. All of our yarn is available online, plus needles, and many patterns and books. Debbie has been BUSY updating, uploading, and writing uplifting descriptions.

We hosted our first ZOOM class this summer. Thirteen brave souls signed up for the

XX-One Sweater (which is not an easy pattern or design to follow). We met online five times between July and September. Most everyone is doing well with their sweaters. A couple of people have decided to wait and knit the sweater later this fall when they have more time to devote to the project. One problem I see with a Knit-Along (KAL) is that people think they need to complete their project during the span of time allotted for the class. This is not the case. In our classes, we swatch and practice "difficult" components of the project - but you may not be ready to complete the project for weeks or months (years, even). Knitting is not a race.

CLASSES

This fall we are reZOOMing classes. Due to the limitations for meeting in person, we will be using ZOOM for our remote classes. You will receive your Zoom links, class ids and passwords after you sign up.

WONDERFUL WALLABY by Carol Anderson

This fall our knit-along project is the iconic **Wonderful Wallaby Sweater** designed by Carol Anderson in 1983. For nearly 40 years this comfy, easy-to-wear sweater has been very popular. I have made several and given each one away. They are like your favorite hooded sweatshirt with a kangaroo pocket across the front. The pattern is for all sizes beginning with a toddler size 2 and going up to a XXL with a 52" finished chest size. The project uses worsted weight yarn. Some people like to knit a utilitarian design in grey, tan, or navy. Others add stripes, designs, or intarsia in all colors of the rainbow. I have listed the sizes and yardage requirements below. Measurements listed are finished sweater measurements, allowing 2" ease in smallest sizes, 4" in rest.

Child sizes:

- Wanda Wallaby, size 2, 23" chest, 440 yds.
- Willie Wallaby, size 4, 25" chest, 660 yds.
- Wilhelmina Wallaby, size 6, 28" chest, 660 yds.
- Warren Wallaby, size 8, 30" chest, 880 yds.
- Washington Wallaby, size 10, 32" chest, 1100 yds.
- Waylon Wallaby, size 12, 33" chest, 1100 yds.

Adult Sizes:

- Wilma Wallaby, Petite, 34" chest, 1100 yds.
- Winifred Wallaby, Small, 36" chest, 1320 yds.
- Waverly Wallaby, Medium, 40" chest, 1540 yds.
- Wilbur Wallaby, Large, 44" chest, 1760 yds.
- Wyatt Wallaby, X Large, 48" chest, 1920 yds.
- Wisconsin Wallaby, XX Large, 52" chest, 2200 yds.

I first made this sweater for my grandson Kyle when he was about 2 years old. I knit him a navy blue hooded sweater with maize racing stripes on one sleeve in a size 2 because I remembered that with my kids this was a size that they could wear for a long time. When Kyle was 6 or 7 his mom and dad told me that Kyle would not let them remove the maize/blue sweater from his closet. It was his favorite. When they visited Ludington that summer from Seattle, I asked Kyle if he would like a new sweater that fit him. He got to pick the yarn. He picked green for the sweater and orange for the stripes. He wanted it to be just like his original sweater. I made him a size 8 and he was able to wear it for a couple of years. He loved the pocket and the hood. Now, Kyle is in college in California and is 6 ft 4 inches tall. It's probably time to knit him another.



SHIF TALONG by Andrea Mowry

Debbie will be teaching the **Shif talong** hat in December. It incorporates a new technique to learn - Mosaic knitting! This is one of Andrea Mowry's favorite ways to play with combining colors, and is a simple technique for even newer knitters to try out! If you can slip sts, knit and purl - then you can do **Mosaic knitting**! This project uses two colors of sport weight yarn (one solid and one variegated or striping yarn work best) and size 2 & 4—16" circular needles. Debbie used Stonehedge CRAZY for sport weight version and Rowan Felted Tweed for DK version.

Last winter we instituted the *Essential Skills* classes that met every two weeks. We covered *Yarn Selection and Substitution* and *Casting On* in January and *Increases* and *Beginning Colorwork* in February. Then COVID and the shut-down came and we had to suspend all classes. This fall we are bringing the remaining Essential Skills classes to you via ZOOM. Several of you are already registered for all the Essential Skills classes. If so, you will receive an email with instructions about how to retrieve your class information and handouts and how to log in and use ZOOM. If you have not registered, we require that you register online at nauticalyarn.com. Put the class(es) for which you wish to register in your shopping cart. You will checkout as a guest customer, but please provide a password so you can login and retrieve your class handouts via the nauticalyarn.com website. You will need to log in with email and password to receive the handouts. Make note of the email address and password you used for Nautical Yarn before you checkout.

Each class requires a small amount of **homework** so we don't waste class time preparing swatches. Using light-colored worsted weight yarn and size 7-8 needles, cast on 20 sts using any cast on method. Work in stockinette stitch (knit one row, purl one row) for 2 inches. DO NOT bind off. Bring two swatches to each class for which homework is required. See next page for detailed descriptions of each *Essential Skills* class.

KNITALONGS (KAL)

This fall we are featuring 3 projects that use Mosaic Knitting—the *Shiftalong* class, *Straight on the Bias KAL*, and the *Edith Wrap KAL*.

STRAIGHT ON THE BIAS by Iris Schreier of Artyarns

A KAL you may be interested in is the *Straight On The Bias Knitalong* by Iris Schreier who owns Artyarns (a company that features a collection of hand dyed luxury yarn). The KAL signup is through Ravelry. Click on <https://www.ravelry.com/patterns/library/straight-on-the-bias-knitalong> and click on Cast on. You will need to upload a picture of the Artyarns yarn you are using for the project. Then, you will receive the pattern in installments, with new instructions coming when you have completed each section. I am making mine in the colors shown in the picture (Black Ombre-Color 711 and Citron Ombre-Color 717).

Here is what Iris has to say about this beautiful project.

Join us for this exciting and different Shawl using Merino Cloud in 2 colors. Knitalong starts on September 1 and continues through November 1. Artyarns yarn is required for participation! OPTIONAL: Beaded Silk and Sequins in matching colors can be added at the end to make the shawl larger and wider. The basic shawl is 80" long and 18" wide at widest part before blocking. The pattern itself is completely free.

Here's how to join: You must be A MEMBER of Ravelry & LOGGED INTO RAVELRY in order to see CAST ON in the upper right. Hit "Cast On" to create your project page.

Add a photo of the Artyarns skeins you will be using. This must be a photo you yourself have taken, and not one from the Internet. Initially you will receive the Swatch Pattern. Make sure you identify the correct needle size after you have knitted and blocked the swatch.

In early September, you will receive Part 1 via Ravelry Private Message. When you complete Part 1, post a photo on your project page. You should receive Part 2 of the pattern shortly thereafter, and so on.

EDITH WRAP by Lisa Richardson of Rowan Yarns

Popular knitwear designer Lisa Richardson is a name instantly associated with the Rowan pattern house. With a background in tailoring and homewares, Lisa joined Rowan in 2003. Inspired by shape and texture, Lisa's designs showcase interesting stitch details, unique garment structure and stylish techniques with a classically understated, yet innovative brilliance reflected in the global status she now commands.

Join Lisa at "[Lisa Richardson Design - Edith Wrap Knit Together](#)" facebook group where she will be regularly popping in to answer any queries and see how everyone is getting along with the wrap. This design is available as a free pattern download or as a kit including the yarn and pattern by visiting Nautical Yarn. The project uses the Mosaic technique which is a great way of incorporating color work in your knitting in a simple way. You use only one shade of yarn on a row and simply Knit, Purl or Slip stitches to create the effect. You will also be doing: short row shaping to create the asymmetric shape of the wrap. Picot edging and Picking up stitches to work the zig zag ends.



← *Edith Wrap*

Straight on the Bias →



LYS DAY & SHELLY BRAY DAY

nauticalyarn.com

231-845-9868

Last Spring (2020) Local Yarn Shop Day (LYS day) was scheduled but had to be postponed due to COVID19. LYS Day has been rescheduled for Saturday, September 12, 2020. Although Michigan Executive Orders remain in effect that limit gatherings to 10 people or less, we will be celebrating LYS Day in the following manner. Masks and hand sanitizing required.

1. LYS DAY

Nautical Yarn LYS Day will be **BY APPOINTMENT ONLY** on Saturday, Sept 12—one day only. **NO WALK IN CUSTOMERS, PLEASE.** This way we can be sure to conform to the State of Michigan occupancy and group size limitations. To sign up for an appointment, go to <https://nauticalyarn.com/appointments/> or call us at 231-845-9868. When you sign up for your 1/2 hour appointment, you will automatically be registered for some wonderful door prizes. Make sure to include your phone # and email address, so we can notify you of your winnings. We won't be having a yarn tasting this year, but look forward to resuming this tradition in 2021!

2. SHELLY BRAY DAY

Because September 12 is a "By Appointment Only" day, we will be celebrating **SHELLY'S RETIREMENT** so we can monitor the number of people in the shop. Shelly retired in June after 15+ years at Nautical Yarn. It was a sad day for Nautical Yarn but we're happy for Shelly and George who are now free to travel together, weave and craft (Shelly) and hunt and fish (George). We've been trying to plan a retirement reception for Shelly, but with COVID restrictions we've not been able to plan her party. But, September 12 is LYS Day around the world **AND** Shelly Bray Day @ Nautical Yarn! REMEMBER: Sign up for your time slot online. **No walk-ins on September 12.** LYS Day and Shelly Bray Day are by appointment only on 9/12/2020. <https://nauticalyarn.com/appointments/>

3. Special LYS Day yarns and colors

We will be **FEATURING LYS Day PATTERNS, YARNS, AND COLORS** from a variety of vendors. The yarns or colors are typically limited editions and are only available while supplies last. Many of the LYS Day patterns are free or free w/purchase of yarn. These items will be highlighted on our online store at nauticalyarn.com, so you can purchase online or in store.

WINE & WOOL

Wine & Wool with StevenBE has been rescheduled for June 24-26, 2021. We stopped taking reservations due to COVID, but have reopened registrations. Steven graciously expanded his class size to 30, so we have 8 more spots available. Sign up at nauticalyarn.com or call us at 231-845-9868.

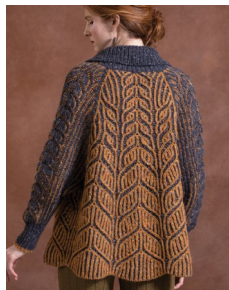
ON & OFF THE NEEDLES

Shelly—Shelly has been busy weaving, making a fairy house and knitting the Wonderful Wallaby Sweater in Serendipity Tweed by Brown Sheep.

Michele—Michele has been (shhh!) crocheting! She also knit the stunning Brioche Amber Leafy Coat using Donegal Tweed and the Lace Poncho using Merino Cloud from Artyarns featured on the covers of Vogue Knitting. Both of these very challenging projects can be seen in the shop.

Debbie—Debbie has been knitting up a storm! Come in and see the colorful shawls and wraps she was busy creating using a variety of yarns in different weights.

Carole—Carole has been knitting men's sweaters. I knit the Anthracite Pullover (a V-Neck pullover) for Chad using 3 colors of Feliz from Manos del Uruguay, the Colonel Henley Sweater (a pullover with a placket front) for Keith using Superwash Wool from Rowan, and Lee (a cable-knit cardigan with shawl collar) for Bob using SoftYak DK from Rowan. Also, I made a crop top called Sunwake to wear over dresses from Pom Pom Quarterly, Summer Shapes using a sparkly linen, Irish Jig, from Interlacements. I am almost finished with a second XX-One sweater in white wool from Signatur Handknits that I knit to use as examples in our first ZOOM class. I am about to begin Orkney—a Fair Isle Cardigan from Rowan with an all-over pattern using Felted Tweed from Rowan.



PRE-ORDER

We have a couple of great gift items that you may wish to pre-order or have someone pre-order for you.

1. **LOPI Blankets**—Retail \$199—[PRE-ORDER LOPI Now!](#) Must be ordered by September 17, 2021

2. **12 Days of Tosh Advent Calendar**—Retail \$100—[PRE-ORDER TOSH NOW!](#)

This triangular treat is 16 individual boxes chock full of 12 Unicorn Tails (52 yd mini skeins of fingering weight superwash Merino), two Tosh treats, two maker tools, and two exclusive patterns. We ordered a dozen and expect these Advent Calendars to sell out fast. Reserve yours now.

Class SCHEDULE

Monday Night ZOOM Knit & Crochet **Staff** **FREE!** **6:00—7:00 PM**
These ZOOM sessions are great if you need a little help or if you want to knit or crochet and chat with others.
Meeting ID: 872 3434 6080

SPECIAL EVENTS

LYS & SHELLY BRAY DAY (BY APPOINTMENT ONLY)
Saturday, Sept 12 from 10:00 AM - 4:00 PM **All** **\$FREE** **10:00 AM - 4:00 PM**
Join us for LYS Day and Shelly's Retirement Reception.
<https://nauticalyarn.com/appointments/>

ZOOM ESSENTIAL SKILLS

BEGINNING LACE
Tuesday, Sept 15 from 1:00 - 3:00 PM **Carole** **\$10** **1:00 - 3:00 PM**
Learn to read a lace chart and how to knit some basic lace stitches. Learn to knit an attached lace border.

DECREASES
Tuesday, September 29 from 1:00 - 3:00 PM **Carole** **\$10** **1:00 - 3:00 PM**
Learn several methods to decrease stitches and, thereby, shape your knitted piece. Some methods include k2tog, p2tog, ssk, ssp, centered double decrease.

MAKING & FIXING MISTAKES
Tuesday, October 13 from 1:00 - 3:00 PM **Carole** **\$10** **1:00 - 3:00 PM**
Learn how mistakes are made (to better avoid making mistakes in the first place) and learn to fix mistakes in your work.

SHORT ROWS
Tuesday, October 27 from 1:00 - 3:00 PM **Carole** **\$10** **1:00 - 3:00 PM**
Learn the whys and wherefores of short rows including the wrap & turn method, German Short Row (Double Stitch) and the Twin Stitch techniques. Discuss the Fish Lips Heel turn (utilizing Twin Stitch) for socks.

BIND OFF
Tuesday, November 10 from 1:00 - 3:00 PM **Carole** **\$10** **1:00 - 3:00 PM**
Learn how to bind off using the "regular method", lace, picot, stretchy, and tubular methods. Class includes Kitchener stitch method. You will never resort to Kitchener Stitch Cheat Sheets again after learning the Academy Award method.

ZOOM PROJECT CLASSES

WONDERFUL WALLABY SWEATER **Carole** **\$35 (includes pattern)** **6:00 - 8:00 PM**
Tuesdays, October 6, October 20, November 3 from 5:00 - 7:00 PM
Learn to knit this iconic, comfy sweater in any size from toddler 2 to adult XXL.

SHIFTLONG HAT **Debbie** **\$25 (includes pattern)** **6:00 - 8:00 PM**
Tuesday, December 1 from 5:00 - 7:00 PM
Andrea Mowry's Mosaic Knitting (Slip-Stitch) Hat that matches The Shift (Cowl), Nightshift (Shawl), and Shifty (Sweater)



Shelly Bray Day

September 12, 2020—10 AM to 4 PM

Select your 30 minute appointment at nauticalyarn.com to attend **Shelly Bray Day & LYS Day** at Nautical Yarn. September 12, 2020 10 AM—4 PM
No walk-in customers on September 12, 2020.

<https://nauticalyarn.com/appointments/>



LYS Day

September 12, 2020—10 AM to 4 PM